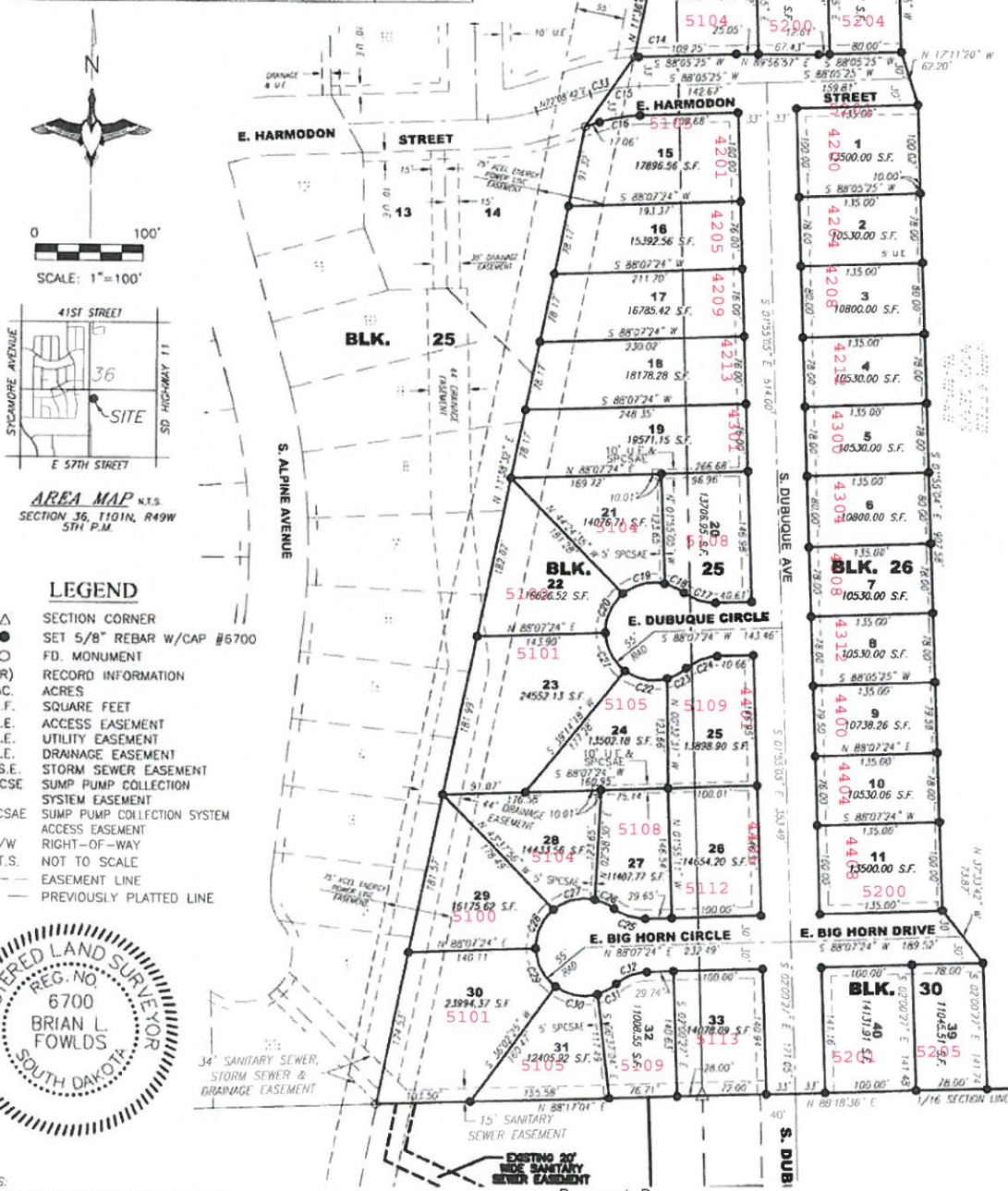


**PLAT OF LOTS 15 THRU 33 IN BLOCK 25, LOTS 1 THRU 11 IN BLOCK 26 AND LOTS 2-4, & LOTS 39 & 40, IN BLOCK 30, ALL OF PRAIRIE GARDENS, AN ADDITION TO THE CITY OF SIOUX FALLS, MINNEHAHA COUNTY, SOUTH DAKOTA**

CURVE	ARC LENGTH	RADIUS	DELTA	CHORD BEARING	CHORD LENGTH
C14	4.93'	233.00'	1°12'46"	S 87°29'02" W	4.93'
C15	31.41'	200.00'	8°59'56"	S 87°35'27" W	31.38'
C16	46.48'	167.00'	15°56'43"	S 86°07'03" W	46.33'
C17	37.82'	55.00'	39°24'02"	S 72°10'35" E	37.08'
C18	24.22'	55.00'	25°14'04"	N 65°05'36" W	24.03'
C19	50.00'	55.00'	52°04'59"	S 76°14'53" W	48.29'
C20	50.00'	55.00'	52°04'59"	S 24°09'54" W	48.29'
C21	50.00'	55.00'	52°04'59"	S 27°55'05" E	48.29'
C22	50.00'	55.00'	52°04'59"	S 80°00'04" E	48.29'
C23	24.22'	55.00'	25°14'04"	N 61°20'24" E	24.03'
C24	37.82'	55.00'	39°24'02"	S 68°25'23" W	37.08'
C25	37.82'	55.00'	39°24'02"	S 72°10'35" E	37.08'
C26	24.22'	55.00'	25°14'04"	N 65°05'36" W	24.03'
C27	50.00'	55.00'	52°04'59"	S 76°14'53" W	48.29'
C28	50.00'	55.00'	52°04'59"	S 24°09'54" W	48.29'
C29	50.00'	55.00'	52°04'59"	S 27°55'05" E	48.29'
C30	50.00'	55.00'	52°04'59"	S 80°00'04" E	48.29'
C31	24.22'	55.00'	25°14'04"	N 61°20'24" E	24.03'
C32	37.82'	55.00'	39°24'02"	S 68°25'23" W	37.08'
C33	24.25'	200.00'	6°56'48"	S 75°37'05" W	24.23'

LINE	BEARING	DISTANCE
L1	N 88°05'25" E	12.12
L2	N 88°15'29" E	13.28
L3	N 88°25'06" E	14.25

ACRE TABLE	
LOTS	71.31 ACRES±
STREETS	3.10 ACRES±
TOTAL	74.41 ACRES±



**AREA MAP** N.T.S.  
SECTION 36, T10N, R49W  
5TH P.M.

**LEGEND**

- △ SECTION CORNER
- SET 5/8" REBAR W/CAP #6700
- FD. MONUMENT
- (R) RECORD INFORMATION
- AC. ACRES
- S.F. SQUARE FEET
- A.E. ACCESS EASEMENT
- U.E. UTILITY EASEMENT
- D.E. DRAINAGE EASEMENT
- S.S.E. STORM SEWER EASEMENT
- SPCSE SUMP PUMP COLLECTION SYSTEM EASEMENT
- SPCSAE SUMP PUMP COLLECTION SYSTEM ACCESS EASEMENT
- R/W RIGHT-OF-WAY
- N.T.S. NOT TO SCALE
- - - EASEMENT LINE
- - - PREVIOUSLY PLATTED LINE



NOTES:  
THIS PLAT WAS PREPARED WITHOUT THE BENEFIT OF A TITLE COMMITMENT.  
THERE IS A 10' U.E. ALONG ALL STREETS.  
ALL DISTANCES SHOWN ON CURVES ARE CHORD DISTANCES.

BASIS OF BEARINGS ARE BASED ON THE UNIVERSAL TRANSVERSE MERCATOR GRID - ZONE 14

Prepared By:  
**MIDWEST LAND SURVEYING, INC.**  
Land Surveying and GPS Consulting  
211 E. 14th Street, Suite 100, Sioux Falls, South Dakota 57104  
Phone: (605) 339-8901 FAX: (605) 274-8951