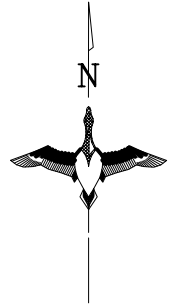


# PLAT OF TIMBERLINE ESTATES

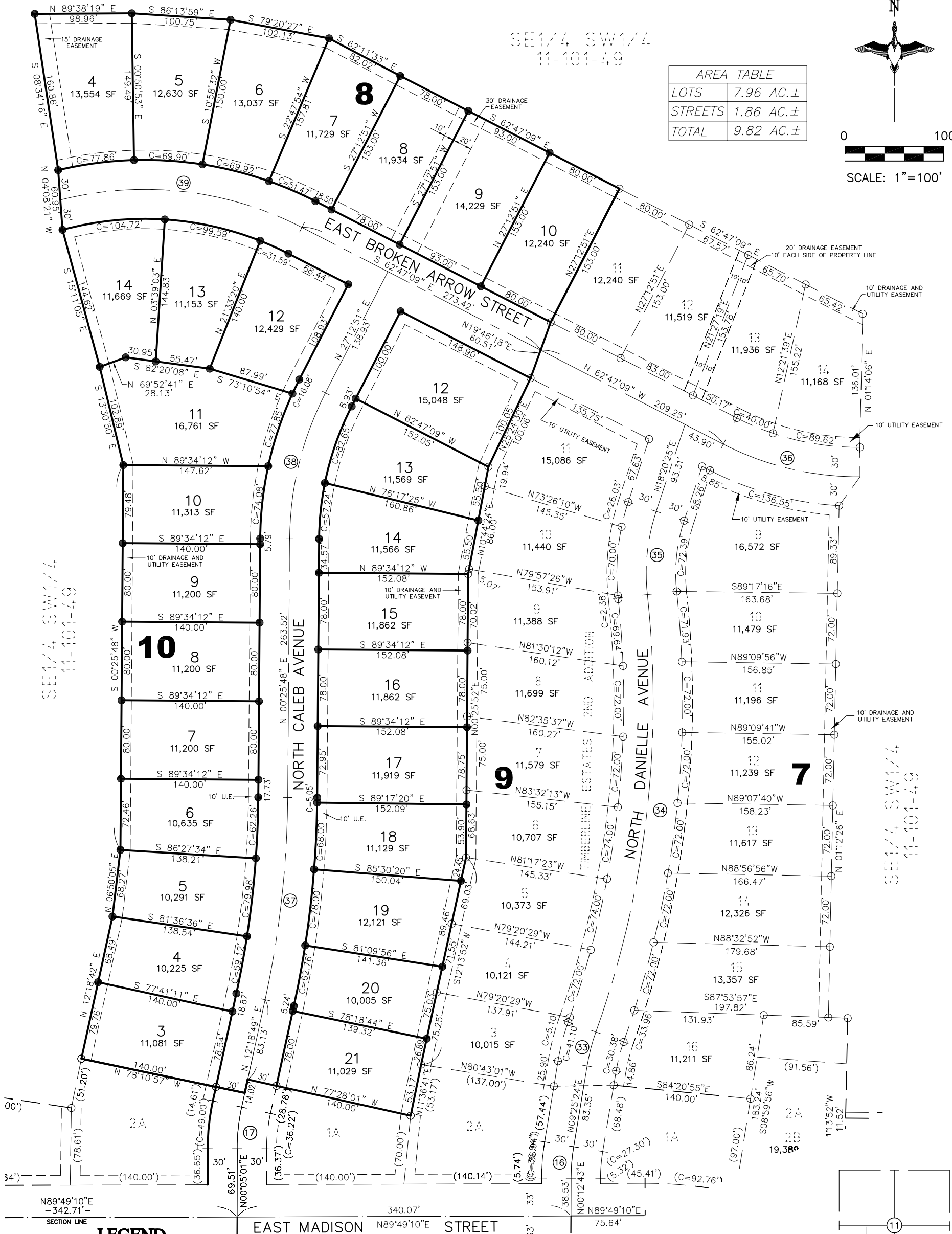
AN ADDITION TO THE CITY OF SIOUX FALLS, MINNEHAHA COUNTY, SOUTH DAKOTA.

SE1/4 SW1/4  
11-101-49

AREA TABLE	
LOTS	7.96 AC.±
STREETS	1.86 AC.±
TOTAL	9.82 AC.±



0 100'  
SCALE: 1"=100'



SE1/4 SW1/4  
11-101-49

SE1/4 SW1/4  
11-101-49

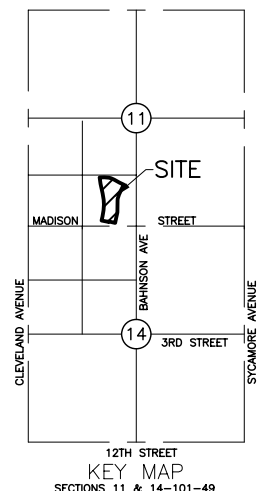
## LEGEND

- SET 5/8" REBAR W/CAP #6700
- FD. MONUMENT
- (R) RECORD INFORMATION
- AC. ACRES
- S.F. SQUARE FEET
- U.E. UTILITY EASEMENT
- D.E. DRAINAGE EASEMENT
- A.E. ACCESS EASEMENT
- R/W RIGHT-OF-WAY
- N.T.S. NOT TO SCALE
- PREVIOUSLY PLATTED LINE
- - - - - EASEMENT LINE

CENTERLINE CURVE TABLE						
CURVE	RADIUS	ARC LENGTH	CHORD LENGTH	CHORD BEARING	DELTA ANGLE	TANGENT
C16	200.00'	32.15'	32.12'	N 04°49'03" E	09°12'41"	16.11'
C17	200.00'	42.69'	42.61'	N 06°11'55" E	12°13'48"	21.43'
C33	200.00'	35.79'	35.74'	N 14°32'57" E	10°15'06"	17.94'
C34	1000.00'	452.40'	448.55'	S 06°42'53" W	25°55'13"	230.14'
C35	200.00'	85.82'	85.16'	N 06°02'50" E	24°35'06"	43.58'
C36	300.00'	144.52'	143.13'	N 76°35'13" W	27°36'07"	73.69'
C37	1000.00'	207.63'	207.28'	S 06°22'41" W	11°53'48"	104.19'
C38	330.00'	154.27'	152.86'	S 13°49'19" W	26°47'03"	78.57'
C39	350.00'	253.15'	247.67'	N 83°30'24" W	41°26'30"	132.40'

THIS PLAT WAS PREPARED WITHOUT THE BENEFIT OF A TITLE COMMITMENT.

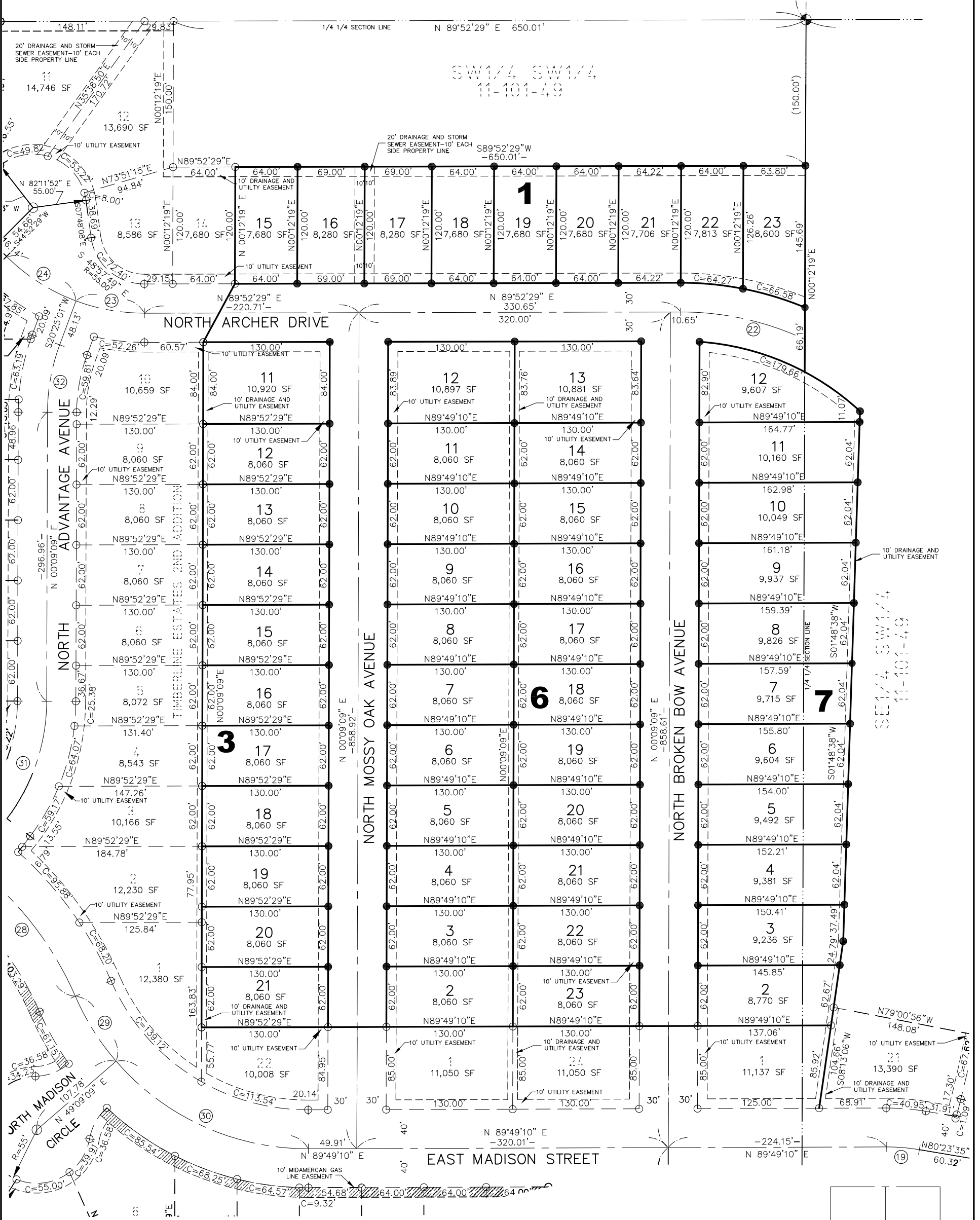
PREPARED BY:  
**MIDWEST LAND SURVEYING, INC.**  
Land Surveying and GPS Consulting  
309 W. 43rd Street, Suite 101, Sioux Falls, South Dakota 57105  
Phone: (605) 338-8901 FAX: (605) 274-8951



NOTES  
BASIS OF BEARINGS ARE BASED ON PREVIOUS PLAT OF TIMBERLINE ESTATES.

# PLAT OF TIMBERLINE ESTATES 2ND ADDITION

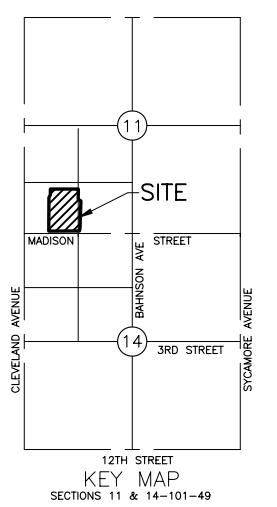
TO THE CITY OF SIOUX FALLS, MINNEHAHA COUNTY, SOUTH DAKOTA.  
(CONTAINING 572,495 S.F., MORE OR LESS)



### LEGEND

- SET 5/8" REBAR W/CAP #6700
- FD. MONUMENT
- (R) RECORD INFORMATION
- AC. ACRES
- S.F. SQUARE FEET
- U.E. UTILITY EASEMENT
- D.E. DRAINAGE EASEMENT
- R/W RIGHT-OF-WAY
- N.T.S. NOT TO SCALE
- PREVIOUSLY PLATTED LINE
- - - EASEMENT LINE

AREA TABLE	
LOTS	10.37 AC.±
STREETS	2.77 AC.±
TOTAL	13.14 AC.±



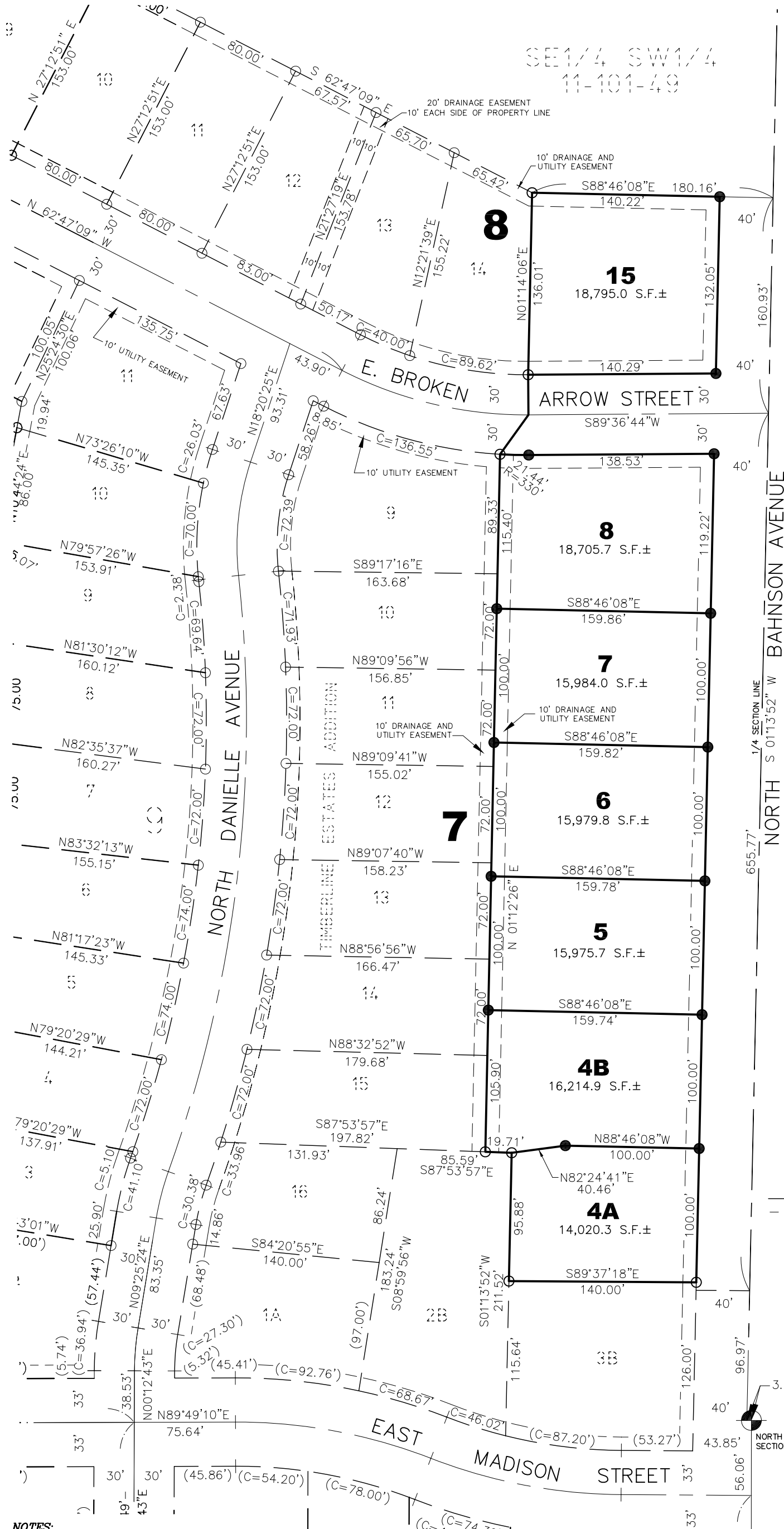
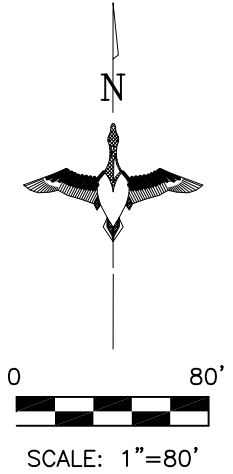
**NOTES**  
BASIS OF BEARINGS ARE BASED ON PREVIOUS PLAT OF TIMBERLINE ESTATES.

# PLAT OF TIMBERLINE ESTATES

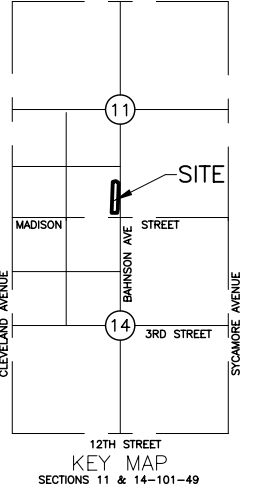
AN ADDITION TO THE CITY OF SIOUX FALLS, MINNEHAHA COUNTY, SOUTH DAKOTA.

SE 1/4 SW 1/4  
11-101-49

AREA TABLE	
LOTS	2.65 AC.±
STREETS	0.95 AC.±
TOTAL	3.60 AC.±



- LEGEND**
- SET 5/8" REBAR W/CAP #8145
  - FD. MONUMENT
  - (R) RECORD INFORMATION
  - AC. ACRES
  - S.F. SQUARE FEET
  - U.E. UTILITY EASEMENT
  - D.E. DRAINAGE EASEMENT
  - R/W RIGHT-OF-WAY
  - N.T.S. NOT TO SCALE
  - PREVIOUSLY PLATTED LINE
  - - - EASEMENT LINE



**NOTES:**  
THERE IS A 10' U.E. ALONG ALL STREET SIDES  
DISTANCES ON CURVES ARE CHORD DISTANCES  
BASIS OF BEARINGS ARE BASED ON THE  
UNIVERSAL TRANSVERSE MERCATOR GRID - ZONE 14  
THIS PLAT WAS PREPARED WITHOUT THE  
BENEFIT OF A TITLE COMMITMENT.

**PREPARED BY:**  
**MIDWEST LAND SURVEYING, INC.**  
Land Surveying and GPS Consulting  
309 W. 43rd Street, Suite 101, Sioux Falls, South Dakota 57105  
Phone: (605) 339-8901 FAX: (605) 274-8951